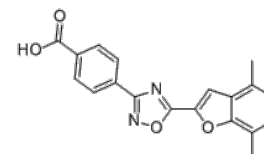


**Product Name** : KCL-286  
**Cat. No.** : PC-21838  
**CAS No.** : 1952276-71-9  
**Molecular Formula** : C<sub>19</sub>H<sub>14</sub>N<sub>2</sub>O<sub>4</sub>  
**Molecular Weight** : 334.33  
**Target** : RAR/RXR  
**Solubility** : 10 mM in DMSO



CAS: 1952276-71-9

## Biological Activity

KCL-286 (C286) is a potent, selective and orally bioavailable **RAR $\beta$**  agonist with EC<sub>50</sub> of 1.9 nM/26 nM/13 nM for RAR $\beta$ /RAR $\alpha$ /RAR $\gamma$ , respectively.

KCL-286 (C286) displays 5-23 fold selectivity for RAR $\beta$  over RAR $\alpha$  (23 fold) and for RAR $\beta$  over RAR $\gamma$  (5 fold) against the human RAR ligand-binding domains.

KCL-286 (C286) possess a promising pharmacokinetic profile in both rat and dog.

KCL-286 (C286) increases neurite outgrowth in vitro and induce sensory axon regrowth in vivo in a rodent model of avulsion and crush injury.

## References

Maria B Goncalves, et al. *Bioorg Med Chem Lett*. 2019 Apr 15;29(8):995-1000.

Maria B Goncalves, et al. *Br J Clin Pharmacol*. 2023 Dec;89(12):3573-3583.

**Caution: Product has not been fully validated for medical applications. Lab Use Only!**

E-mail: tech@probechem.com